

# I-205 Improvements Project

## Stafford Road to OR 213



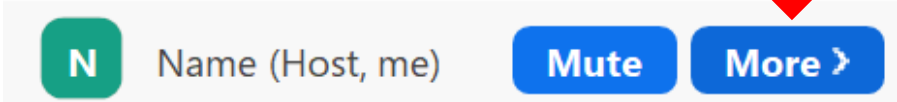
Meet the Primes Event #2 – October 21, 2021

**I-205 IMPROVEMENTS**  
*Stafford Road to OR 213*



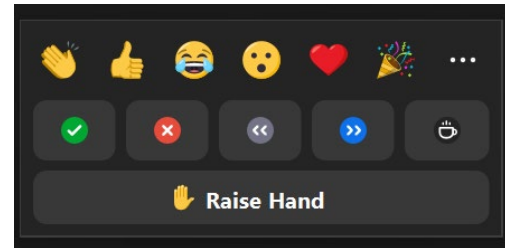
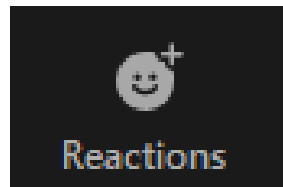
# Zoom Navigation

**Change display name**

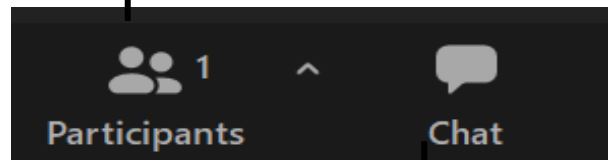


A screenshot of the Zoom name control bar. On the left is a green circle with the letter 'N'. To its right is the text 'Name (Host, me)'. Further right are two blue buttons: 'Mute' and 'More >'. A red arrow points down to the 'More >' button.

## Reactions, raise hand

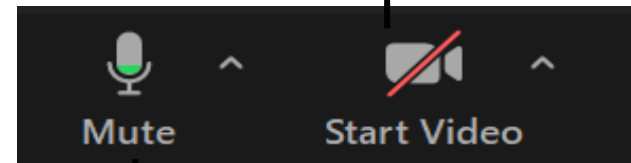


## View all participants



Send a chat

## Start/stop video



Mute/un-mute



# At This Meeting

- Welcome
- Introductions
- Project Overview
- Diversity Program & Goals
- Q&A
- Breakout Sessions
- Next Steps



# DBE Participants

Company	Attendee(s)	Service(s)
A&D Flagging, LLC	Ashley Glass	Traffic control.
AB Construction Group, LLC	Arnold Sanchez	Excavation: site prep, land clearing, concrete prep, road improvement and underground utilities.
Advanced Government Services	Estimating Pine	Traffic control.
Aligned Engineering, LLC	Rose Rippee	Civil engineering, drafting and design.
AllSource Construction Supply	Debra Rockway	Concrete accessories, general construction and safety supplies.
ASN	Franklin Smith	Electrical, IT and GC.
Bailey's Construction Unlimited	Tyrone Sr Bailey	Trucking.
Bauer Foundations Corp	David Miller	Drilled shafts, soil mixing and ground improvement.
BIM Connection, LLC	Herb Yamamoto	BIM and 3D Modeling.
Clark Moore Trucking, Inc.	Hong Moore	Trucking and hauling.
Braun Construction	Jeanie Braun and Andrew Braun	Underground utilities, excavation, stormwater, trenching, habitat and stream restoration.
Cafferata Consulting, LLC	Fran Cafferata Coe	Wildlife, ESA, wetlands and permitting.

# DBE Participants

Company	Attendee(s)	Service(s)
Cascade Environmental	Jennifer Levy	Environmental engineering.
Cascade GIS & Consulting	Erica McCormick	GIS, mapping and spatial analysis.
Chick of All Trades	Jacob Gordon	Traffic control.
Convergent Pacific	Hardy Li	Civil, structural engineering and survey.
Cutter Construction Co, Inc.	Lori Pottratz	Trucking and hauling.
Diversified Technology, Inc.	Antoinette Merchant	Employment agency.
Donaldson Consulting, LLC	Suzanne	
Ducks Marine Construction, Inc.	Travis Olson	Marine inspection, river barging, on-water material deliveries, OR licensed PE, construction engineering and contract administration.
Elevate UAS, LLC	Sterling Barnes	Remote Sensing.
Emerio Design, LLC	Michael Hohbach	Civil roadway, highway, survey, utility coordination, ADA scoping and design
Espousal Strategies, LLC	Jason Hagen and Monika Johnson	Community engagement, DEI, facilitation and planning.

# DBE Participants

Company	Attendee(s)	Service(s)
FM Burch and Assoc., Inc.	Faye Burch	DBE technical support DEI.
Fox Erosion Control and Landscape, Inc.	Jane Marsh	Hydroseeding, erosion control and landscape installation.
Infrastrong, LLC	Jabbar Craigwell	Trucking.
Intelligent Partnerships	Daniel Villao	
JC Pro-builders Construction, LLC	Brenda Castillo	Siding, windows, doors, paint, roofing, sheetrock etc.
Logic Intelligence	Promod Antony	IoT/telemetry, business intelligence, data analytics and GIS.
Madlyn Metal Fab, LLC	Stacy Toristoja	Structural steel metal fabrication.
MARCO Ideas Unlimited	Nancy Gudekunst	Imprinted apparel, customized safety awards and safety gear.
Meltar Supply	John Downing	Material supply.
Moore & Orr Trucking ,LLC	Lionel Moore and James Orr	Dry van.
Native West Corp	Bradley Senner	Metals and misc., transportation and contracting for specialty projects.
Nemariam Engineers & Associates, LLC	Haregu Nemariam	

# DBE Participants

Company	Attendee(s)	Service(s)
Northwest Enforcement	Lindsey Cabrera	Private security.
NSI Engineering, Inc.	Carrie Cabak	Quality, project, risk, schedule management and systems engineering.
NW Carpenters	Desi Wright	Skilled workforce.
NWI	M.M.	Aggregate sales, trucking, demolition, grading, utilities and earthwork.
Pacific Office Solutions	Daniel Gomez	MRO, Industrial, office and janitorial supplies.
PointNorth Consulting, Inc.	Colleen Frank	Public involvement, community engagement, organizational development and strategic communications.
Pro Eagle Trucking, LLC	Maurice Mayes	Water transportation.
PRR	Colleen Gants	Public Involvement, research and communications.
Regional Council of Carpenters	Michael Burch	Construction.
RIE Consultants	Mizan Rashid	Hydraulic and hydrologic modeling, drainage, stormwater modeling and management, flooding studies, fish passage and scour analysis.
Rivero Design	Maria Rivero	Civil Design, drafting and project management.



# DBE Participants

Company	Attendee(s)	Service(s)
R&D Construction Company & Daughter, LLC	Dana Minthorn	
Theuracare, Inc.	Lillian Chan	Transit buses, electronics, wayside LEDs and LCDs, installation and maintenance.
Thuy Tu Consulting, LLC	Thuy Tu	Transportation planning.
Underline	Michael Molina	
Warm Springs TERO	Wendell Jim	Refer Native American Indian workforce and contracting.
Wolf Water Resources	Steven Rodriguez and Darlene Siegel	Section 408, hydrology, hydraulics, eco assessments, permitting, FEMA CLOMR-LOMR and habitat restoration design.
Zilo International Group, LLC	Milena Zilo	



# Introductions (Primes)



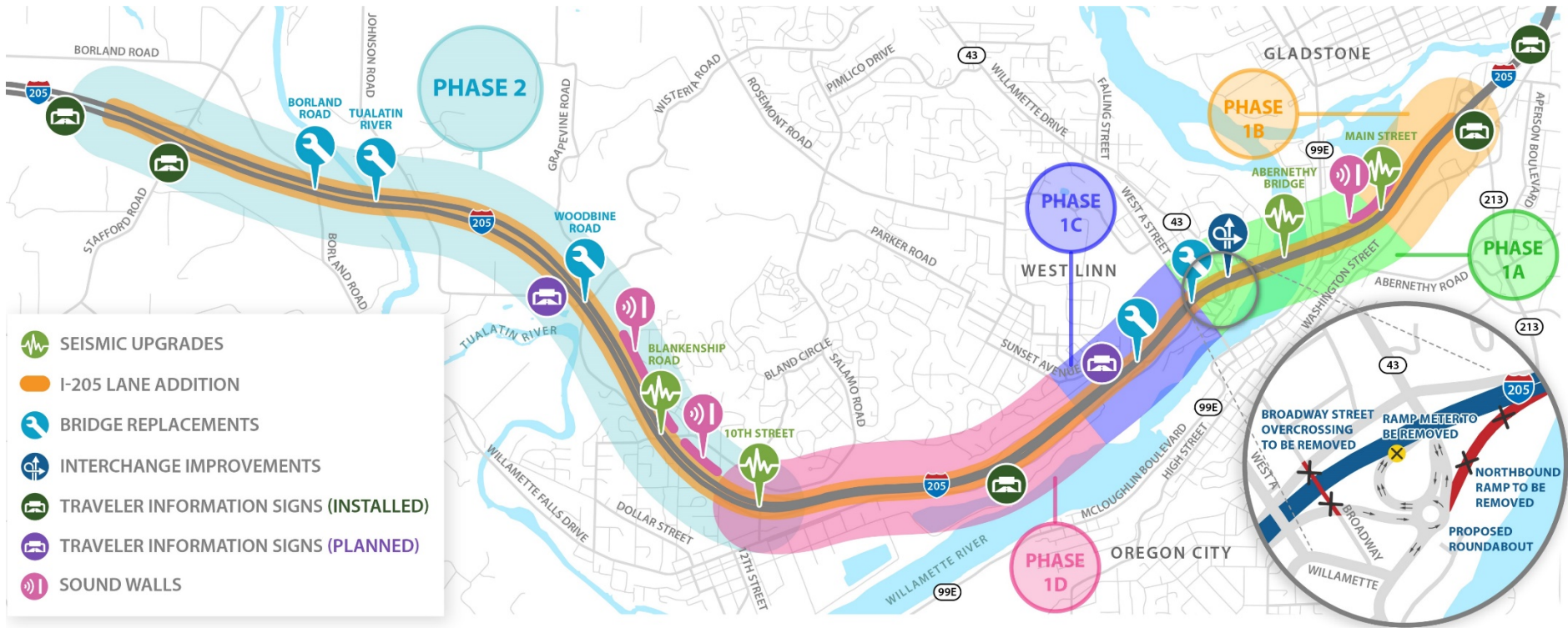
**SKANSKA**



**WALSH**



# Project Improvements



# Phase 1 Schedule



\* Scheduling of Phases 1B, 1C and 1D is currently tentative and will be refined spring 2022.

# Phase 1A Details - West Linn



**1** Update Willamette Falls Drive/OR 43 intersection. Includes multi-use path.

**3** Interim I-205 northbound ramp connection to OR 43.

**5** Update OR 43 intersection at I-205 southbound ramps.

**2** Southern limit of I-205 roadwork at West A Bridge.

**4** Construct final configuration of OR 43 roundabout, northbound entrance and southbound exit ramp.

**6** Abernethy Bridge seismic upgrades and widening.

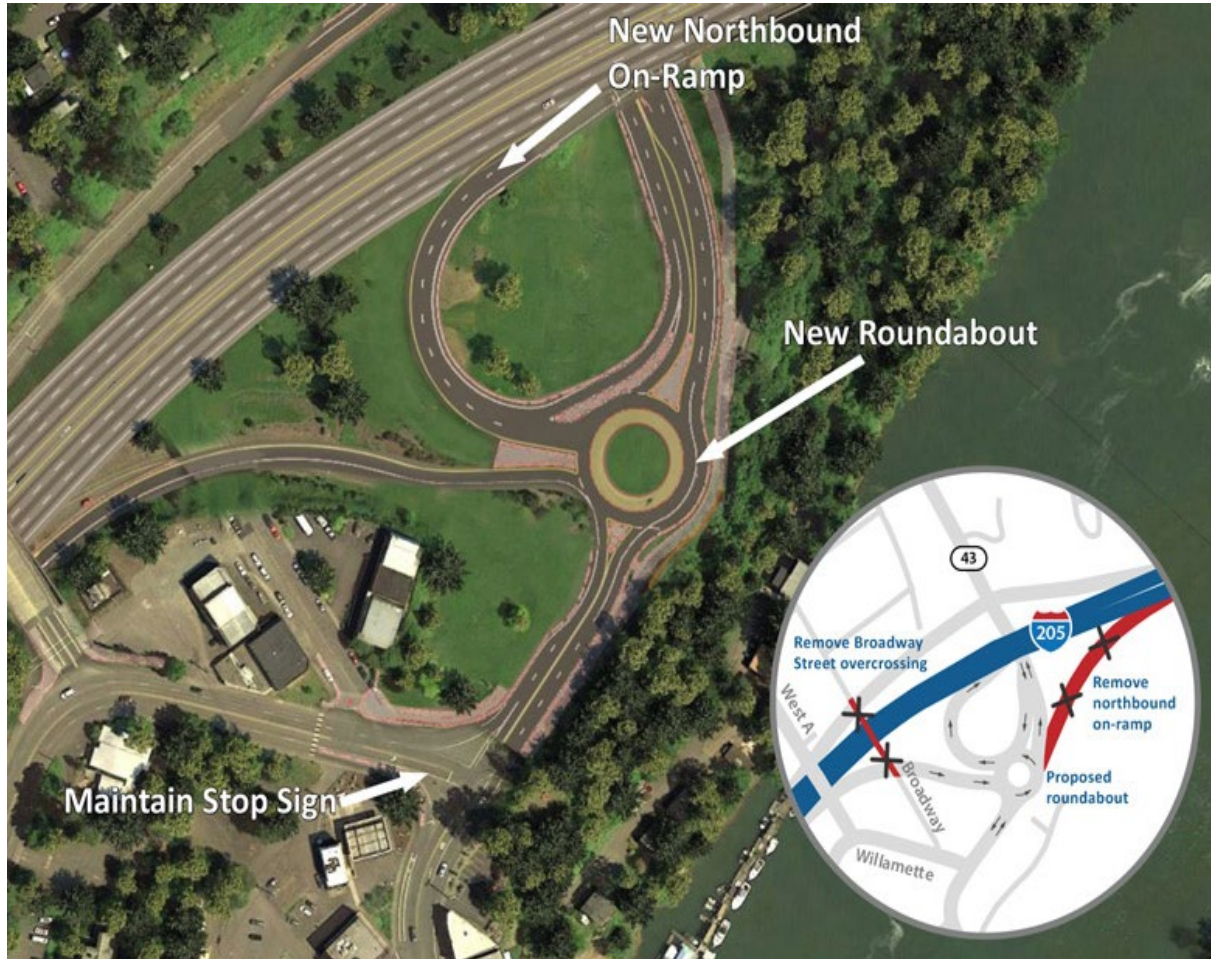


# Phase 1A Details - Oregon City



- 7** Construct final configuration of OR 99E southbound and northbound ramp intersection, OR 99E entrance ramp and Clackamette Drive walls. Includes multi-use path.
- 8** Construct wall at Main Street.
- 9** Construct half of the configuration of northbound entrance ramp. Final configuration dependent on Main Street Bridge work in Phase 1B.
- 10** Northern limit of I-205 roadwork at Main Street Bridge.
- 11** Construct sound wall.
- 12** Re-stripe southbound lanes from two lanes plus an auxiliary lane to three lanes between OR 213 entrance and OR 99E exit. Install rumble strips.
- 13** Sign bridges for new southbound traffic configuration.

# Interchange Improvements



## OR 43

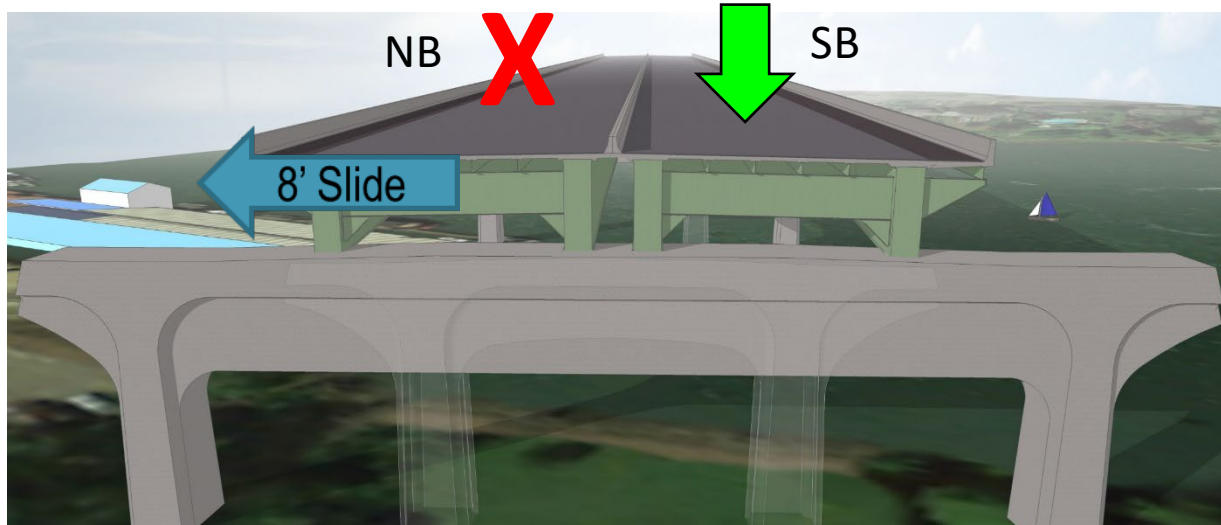
- New roundabout
- New multi-use path along OR 43 to Willamette Falls Drive
- New rapid flashing beacon and crosswalk across OR 43 to Willamette Falls Drive and West A Street

## OR 99E

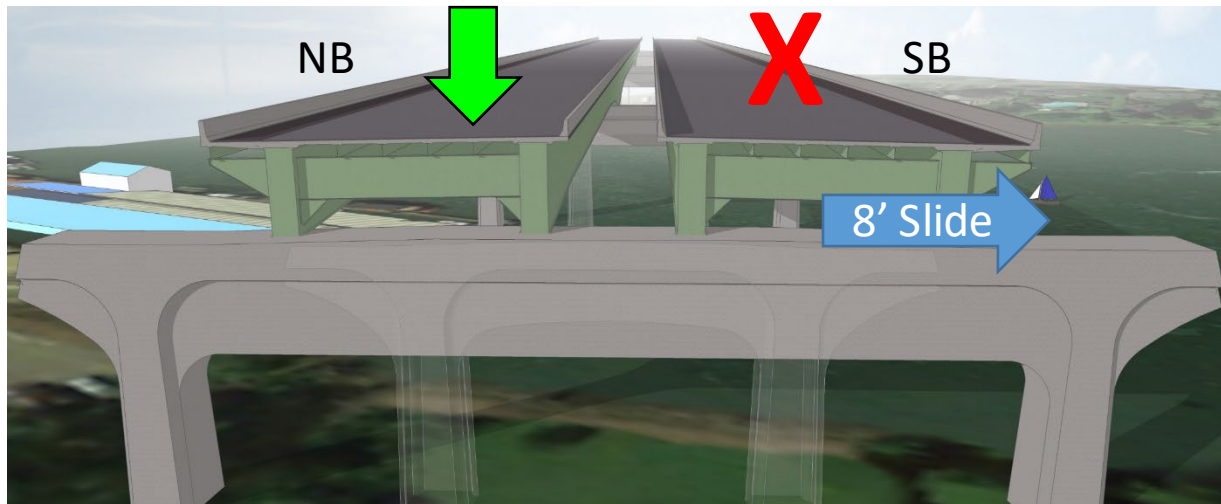
- Realigning/widening on- and off-ramps
- New multi-use path
- Two new sidewalks

# Abernethy Bridge Construction Staging

**1: Widen each side and slide one direction**



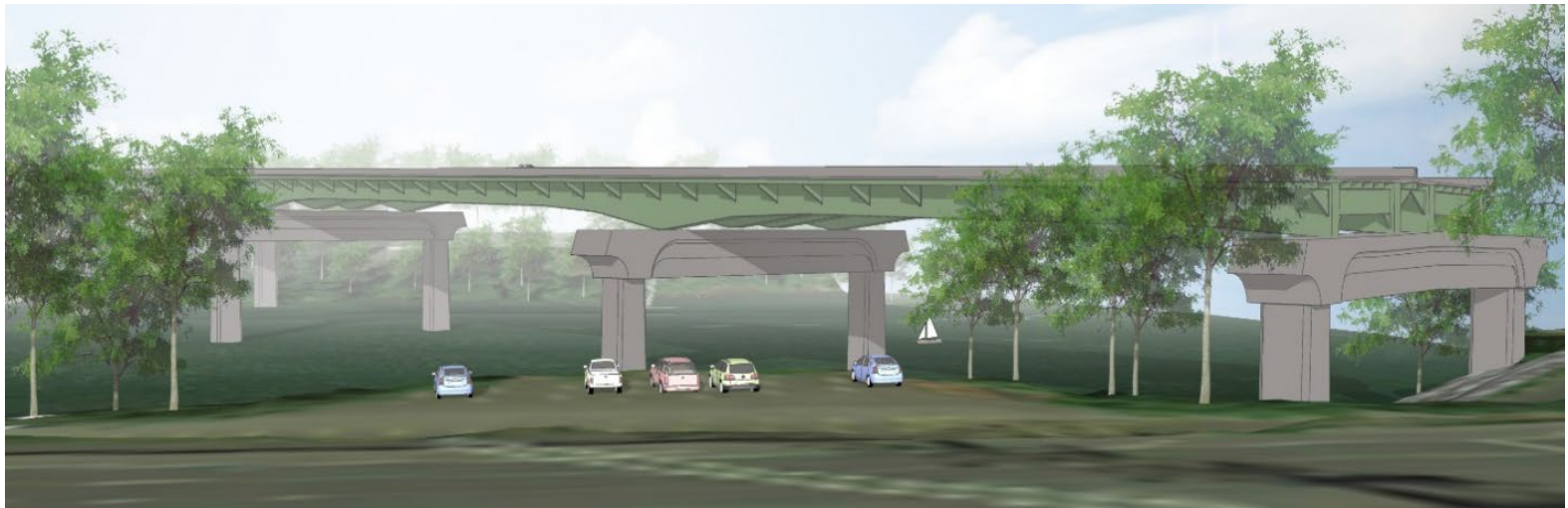
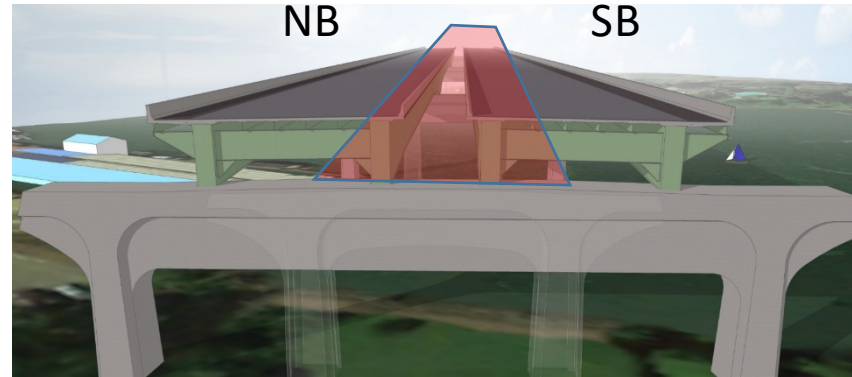
**2: Slide the other direction**





# Abernethy Bridge Construction Staging

## 3: Construct the interior section



The new Abernethy Bridge, shown here with new strengthened columns, will be able to withstand a major earthquake



# A+C+D Procurement and Schedule – Phase 1A



## Technical Approach and Qualifications Under Development:

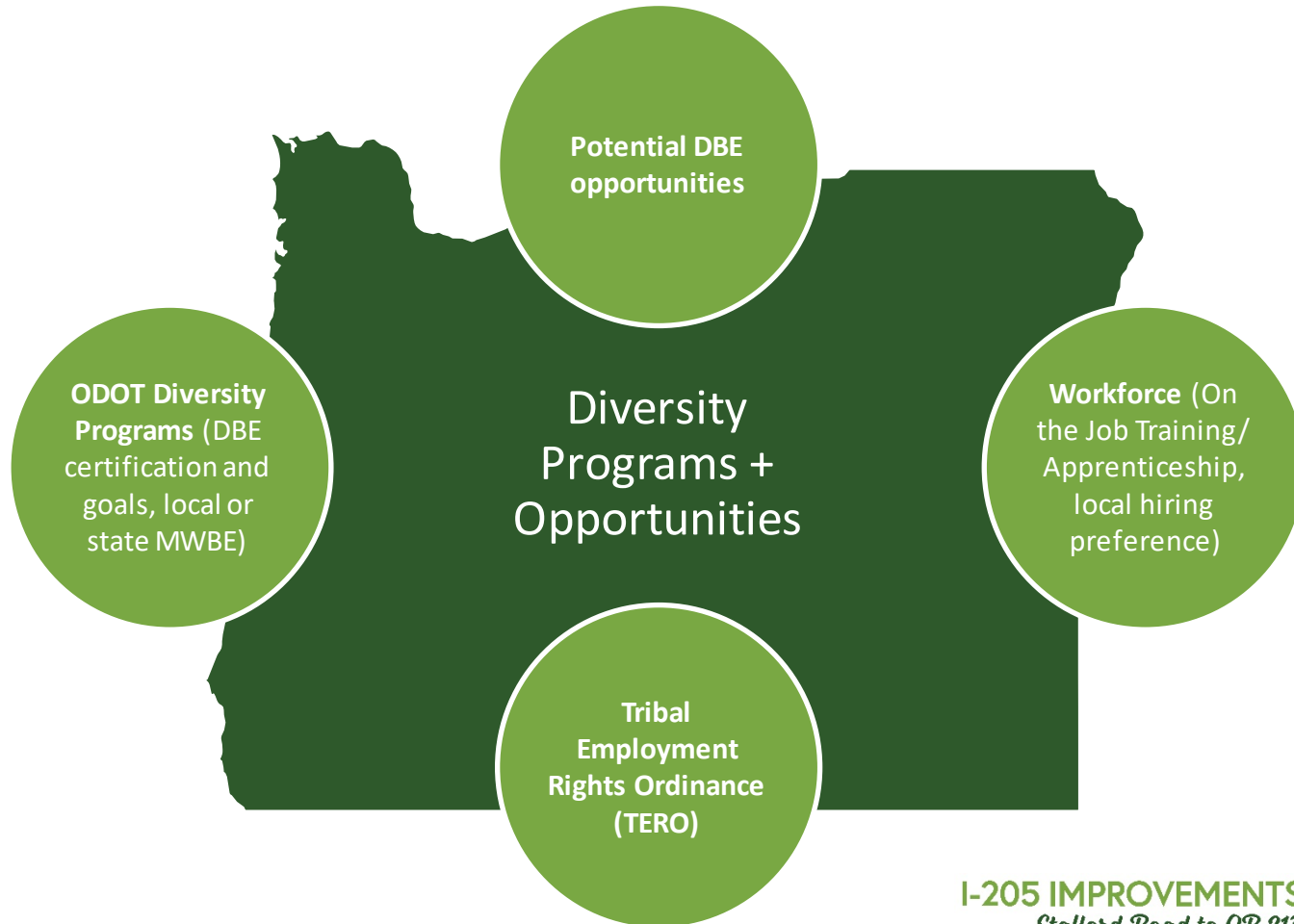
- Bridge construction – slide, drilled shafts, ground improvements, marine access, temporary work bridges
- Maintenance of traffic
- Permit compliance
- Temporary traffic control

## Schedule Critical Item:

- Advertisement – 12 weeks (Anticipated early December 2021)
  - 8 weeks for technical, 4 weeks for price
- Anticipated Notice of Intent to Award - early March 2022
- Anticipate NTP – mid-April 2022

# Diversity Programs + Opportunities

Phase 1A contract will include DBE/workforce goals and ODOT is seeking to include a local hiring preference.



# Project Diversity Goals

- Proposed DBE Construction Goal – 14%
- On the Job Training/Apprenticeship - 20%
- Aspirational Targets – Minority 20% & Female 14%
- Zip Code Priority Hiring – 8%

# Potential DBE Opportunities

Categories of opportunities include:

- Stormwater and Trenching
- Temporary Work Bridges and Access Roads
- Concrete
- Drilled Shafts
- Electrical
- Vegetation and Planting
- Excavation and Trucking
- Guardrail
- Professional Services
- Asphalt Paving
- Signage and Traffic Control

See detailed list of over 100 opportunities at:

<https://i205corridor.org/construction-workforce>



# Workforce Development Pilot Program



Announced in June of 2021



Allows a hiring preference and/or innovative contracting approach



Helps increase availability and workforce development opportunities for existing training and apprenticeship programs



Operates under FHWA's Special Experiments Project No. 14 (SEP-14)

# Local Hiring Preference Application

## Application is underway and includes:



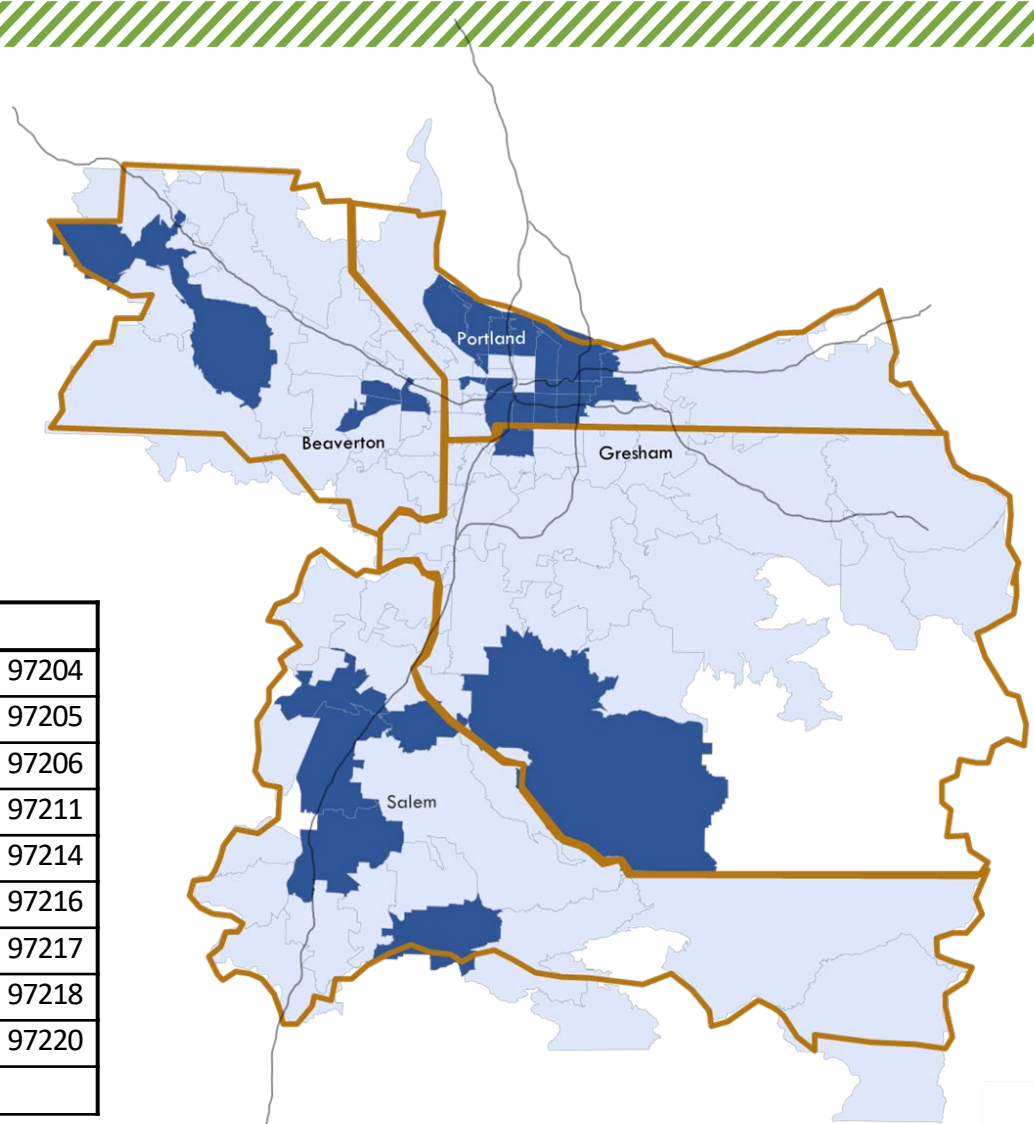
### **ODOT certifications**

- A pool of readily available but unemployed individuals possessing the knowledge, skill, and ability to perform the work contract requires reside in the SEP-14 area.
- The bid document will include language prohibiting the contractor from displacing existing employees.
- Any cost increases related to implementing the local hiring preference will not impact the STIP or TIP.



### **Local hiring preference specifications**

# Priority Hiring Zip Codes



**I-25 Workforce Priority Hiring Zip Codes**

97003	97222	97204
97005	97227	97205
97024	97230	97206
97026	97233	97211
97030	97236	97214
97038	97266	97216
97078	97305	97217
97116	97317	97218
97202	97362	97220
97203	97383	

# TERO Contact & Goal

## TERO GOAL

5%

### **Harris Reibach, MBA**

Director, Tribal Employment Rights Office (TERO)  
Confederated Tribes of Grand Ronde

Office: 503-879-1455

Cell: 503-871-4816

Fax: 503-879-2166

[harris.reibach@grandronde.org](mailto:harris.reibach@grandronde.org)





# Q&A





# Breakout Sessions



# Next Steps



- Fall tree removal contract awarded – HP Civil
- Scheduling of Phases 1B – 1D is tentative and will be refined spring 2022
- Phase 1A bid let – spring 2022



# Thank You!

## For more information, contact:

Allen Hendy, PE – ODOT Project Manager

Phone: 971-235-3861

Email: [205improvements@odot.state.or.us](mailto:205improvements@odot.state.or.us)

Website: [i205corridor.org](http://i205corridor.org)